

Rapid Flyer Lucky Duck Instructions

Thank you for purchasing the Edge Innovative Hunting Rapid Flyer Lucky Duck™. We hope this product brings you many years of waterfowl hunting success! At Edge Innovative Hunting, we leave our competition standing still!

Included in the box:

- 1) Rapid Flyer Lucky Duck body
- 2) 3pc metal stake with T-shaped mounting bracket
- 3) 6V rechargeable battery
- 4) 6V battery charger
- 5) (1) Set of Rapid Flyer Wings
- 6) (1) Set of orange feet (inside duck body battery mount compartment)
- 7) Package of fastening hardware (inside duck body battery mount compartment)

Set up of Rapid Flyer lucky duck is quite simple. The first thing you will want to do is charge your battery for 24 hours. The battery will have a small charge on it so you can test your duck function if you like before charging the battery. Attach the Red alligator clip to the (+) battery terminal and Black to the (-) battery terminal

- 1) Locate the feet found inside the body cavity of the duck and the T shaped mounting bracket found inserted in the top of one of the metal stake sections.
- 2) Remove the protective rubber covers from the threaded shafts that protrude from the legs.
- 3) Slide each of the feet over the threaded studs that come out of the legs on the duck body.
- 4) Slide the T-shaped mounting bracket over the studs as indicated in the Figure 1 below.

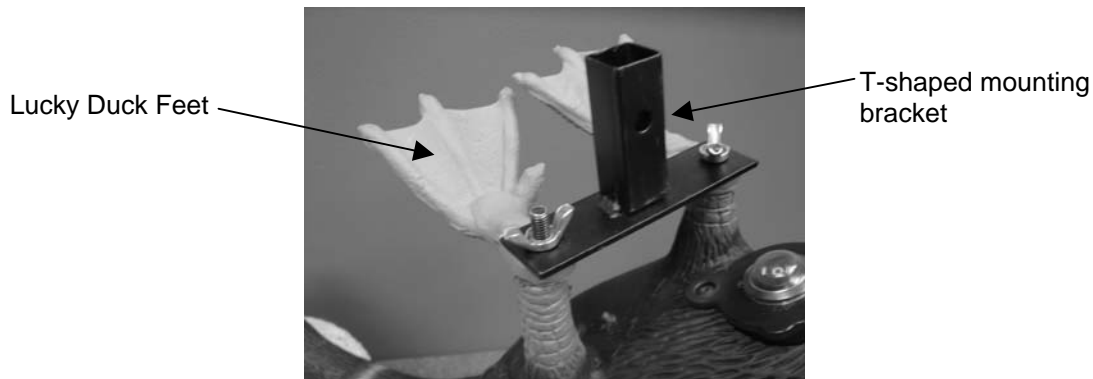


Figure 1

- 5) Remove the wing nut from the battery retainer clip found directly behind the motor inside the decoy body and insert the 6V battery as shown in Figure 2 below. Replace the battery retainer clip and wing nut and hook up the Red wire (with fuse) to the RED (Positive) battery terminal and the BLACK(Negative) battery terminal.

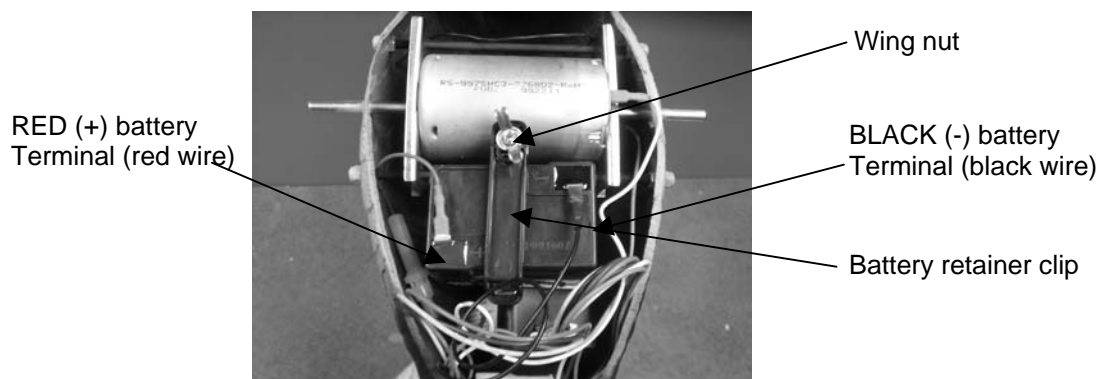


Figure 2

- 6) The 3 pc pole has 3 different width pole sections. The bottom 2 sections will have a spring button close to the top, and middle and top sections have a hole on the same side as the spring button close to the bottom. Slide the smallest diameter section inside the middle diameter section lining up the hole in the bottom of the middle section with the spring button in the top of the bottom section. The sections will snap together when the hole and spring buttons engage. Then slide the top end of the middle section into the bottom end of the T-shaped section, again lining up the hole in the bottom of the T-section with the spring button at the top of the middle section. Secure each section with the provided thumbscrew. **To disassemble, follow the above steps in reverse. It is best not to make the pole into a telescoping pole as debris and ice can form between the sections causing them to freeze together and not come apart when next used.**
- 7) Insert the T-Shaped mounting bracket, you previously mounted to the duck, inside the top of the T-shaped section of the 3pc pole and secure with provided thumb screw

Installing the wings:

- 1) Determine which wing is the right and which wing is the left. **To do this pay attention to the blue patch on the top of the wing. This always goes to the back of the duck.**
- 2) Tip the wing back so the T-shaped mounting feature lines up with its corresponding slot in the mounting bracket in the top of the duck. Insert the round end of the mounting feature into the slot and slide the wing all the way in until it stops.
- 3) Once the mounting feature stops, tip the wing down into its normal position. Make sure the wing is all the way in before attempting to swing the wing down. **If not, it could damage the mounting bracket.**
- 4) On the underside of the wing, there is a linkage with a cam in the bottom with a thumbscrew protruding from it. Loosen the thumbscrew and slide the cam over the motor shaft until it stops so the screw is lined up with the flat on the motor shaft. It's very important the screw is lined up with the flat on the motor shaft or your wings will not flap properly. Tighten the thumbscrew on the cam down until it's tight against the flat on the motor shaft.
- 5) Repeat steps 1-4 above for the other wing. See Figures 3-6 below for detail photos.



Figure 3

T-shaped mounting feature

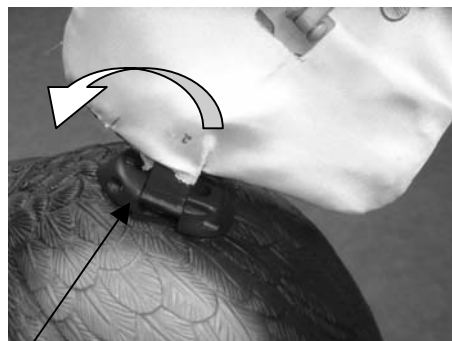


Figure 4

Insert all the way until the T-shaped mounting feature stops (bottoms out) before folding the wing down

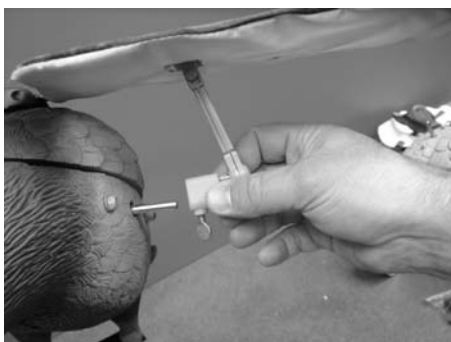


Figure 5



Figure 6

Turning the unit ON:

On the bottom of the tail is a rocker switch. Press the switch forward and the wings will start to flap.

If you purchase a remote control for your Rapid Flyer Lucky Duck (Part number#21399-5) you will put the switch in the "I" position, or in the back position for the remote control to work with it. Forward is Manual Mode, Backward is Remote mode.

Adjusting the flapping speed:

You may find it desirable to adjust the wing flapping speed. To do this, you rotate the rheostat knob on the bottom of the duck. Rotate it clockwise to speed it up, counterclockwise to slow it down. In direct sunlight on warm days, it's possible that the internal wing material will warm up enough to soften slightly. This will not hurt the wings in any way. You will know this has happened if the wings start vibrating rather than flapping. You can slow the motor down to re-achieve a flapping condition by turning the rheostat counterclockwise.

There are several accessories available for this product.

Intermittent Timer: Part # 41606-8 This creates a very realistic landing duck appearance as the wings will randomly flap and stop. This feature also increases battery life substantially.



Waterfowl Remote Kit: Part # 21399-5 This allows the decoy to be turned off and on with a remote control key fob.



Lucky Storage Bag: Part # 72010-3: This is a camo bag with M2D camo heavy denier nylon. It holds the decoy, Wings, extra battery, charger and pole and protects your expensive decoy when not in use.



WARRANTY

Edge by expedite warranties this product to manufacturer's defects for 1 year from the date of purchase. Any damage caused by carelessness or misuse of this product is not covered under this warranty. Proof of purchase is required for us to honor this warranty.

Check out our other hunting products at www.edgebyexpedite.com or call us at 715-381-2935

